



Bluetooth MIDI Connection Guide

Contents

Connections with an iOS/Android device	2
Operating requirements	2
How to connect	2
Connections with a Mac.....	3
Operating requirements	3
OS X El Capitan or later	3
OS X Yosemite	4
Connections with Windows.....	5
Operating requirements	5
Installation procedure	5
Connections	5
Note	6

- iPad, iPhone, iPod touch, Mac, iOS and OS X are trademarks of Apple Inc., registered in the U.S. and other countries.
- Android is a trademark of Google Inc.
- Windows is a trademark of Microsoft Corporation in the U.S. and other countries.
- Bluetooth is a registered trademark of Bluetooth SIG, Inc.
- All product names and company names are the trademarks or registered trademarks of their respective owners.

Bluetooth MIDI Connection Guide

This document explains how to use a Bluetooth MIDI device via a wireless connection.


TIP The contents and operation may differ depending on your operating system or the version of your app. For the latest information and more detailed information, refer to the VOX website (www.voxamps.com).

Connections with an iOS/Android device

Operating requirements


iPhone/iPad/iPod touch that supports Bluetooth low energy and has iOS 8 or later installed.

Android tablet/phone that supports Bluetooth low energy and has Android 6.0.1 or later installed.

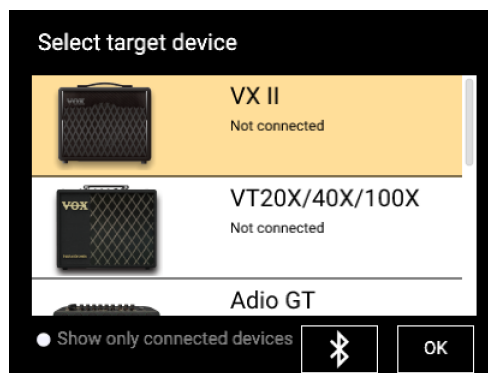
 Bluetooth MIDI connection failure may occur on some Android devices that support the requirements, since the Android manufactures customize their own devices.

How to connect


Open the “Settings” app and enable the Bluetooth function.

 [Android] “Location” setting (Open the “Setting” -> “Personal”) needs to be ON in order to scan your Bluetooth low energy devices.

Launch Tone Room and tap the Bluetooth button under the “Select target device” display.



Tap your Bluetooth MIDI device from the list to connect.

 This connection operation is required each time you use a Bluetooth MIDI device.

Bluetooth MIDI Devices	
tap to connect/disconnect	
Adio Air GT MIDI	Not connected

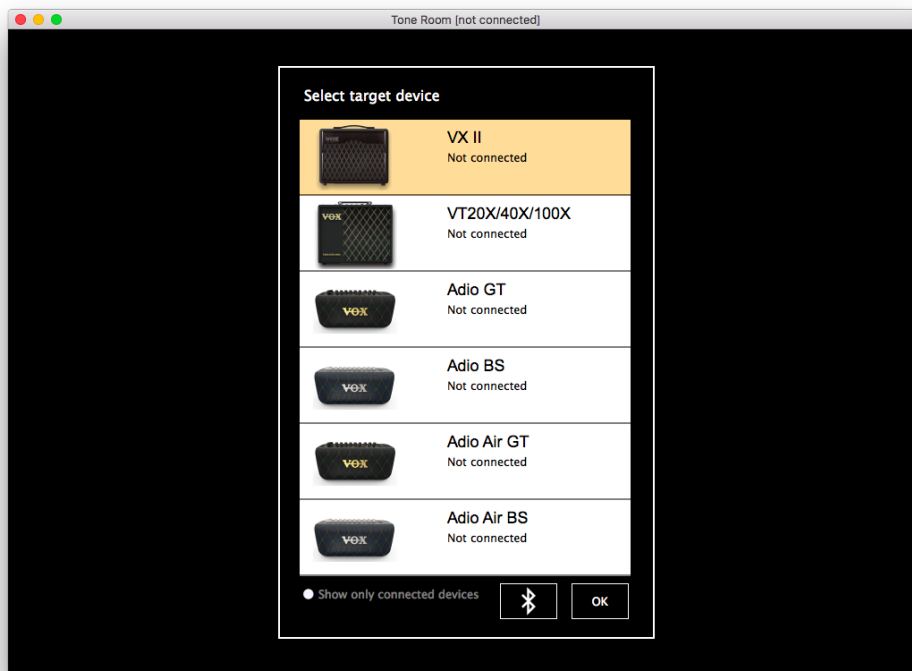
Connections with a Mac

Operating requirements

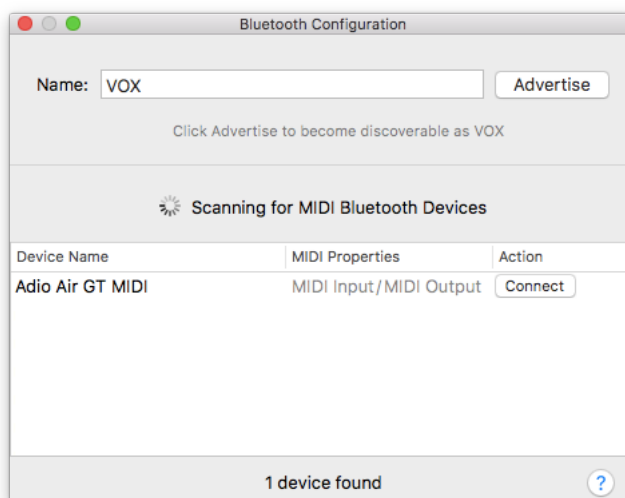
Mac that supports Bluetooth low energy and has OS X Yosemite 10.10 or later installed


OS X El Capitan or later

Launch Tone Room and click the Bluetooth button under the "Select target device" display to open the "Bluetooth Configuration" window.



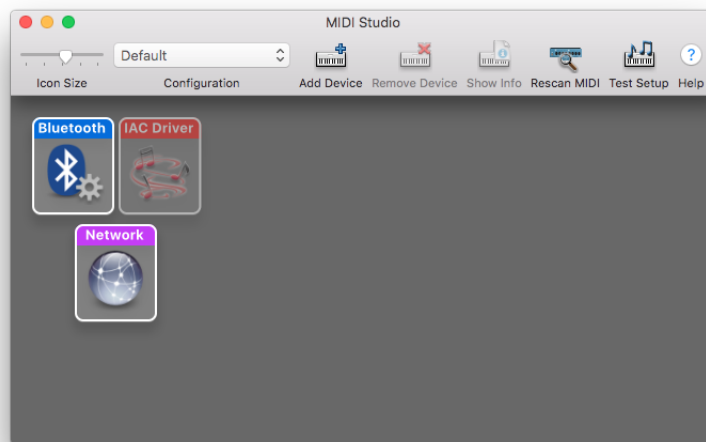
Click "Connect" button of your Bluetooth MIDI device from the list in the configuration display. The MIDI port of the device will be available.



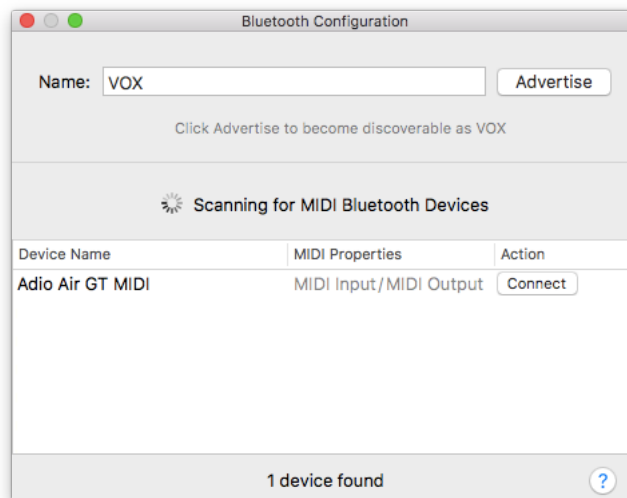
 This connection operation is required each time you use a Bluetooth MIDI device.


OS X Yosemite

Start “Applications”-“Utilities”-“Audio MIDI Settings,” and choose “Show MIDI Studio” from the “Window” menu to open the MIDI studio window.



Double-click the Bluetooth icon to open the Bluetooth Configuration window. Click the “Connect” button of the Bluetooth MIDI device in the list shown in the window; now you can use the MIDI ports of the selected Bluetooth MIDI Device.



 This connection operation is required each time you use a Bluetooth MIDI device.

Connections with Windows

Operating requirements

PC that has Windows 8.1 or later installed and is equipped with Bluetooth low energy, or a computer with a connected USB adapter that supports Bluetooth low energy.

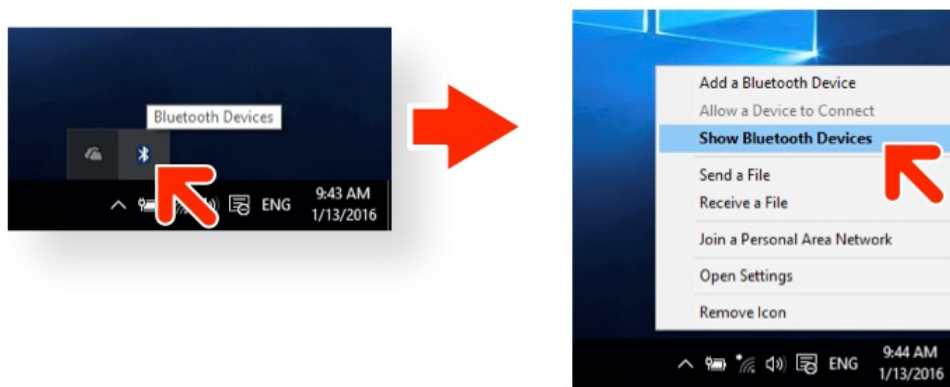
Installation procedure

Download “VOX BLE-MIDI Driver” from VOX website (www.voxamps.com) and install it. Please refer to the installation manual.

Connections

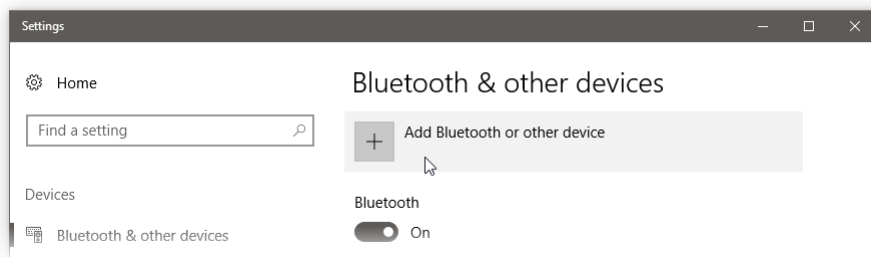
First “Pairing” process is required to connect Windows and a Bluetooth MIDI device.

1. Turn on the Bluetooth MIDI device, and enable its wireless functionality.
2. Click the Bluetooth icon in the task tray, and choose “Show Bluetooth Devices.”

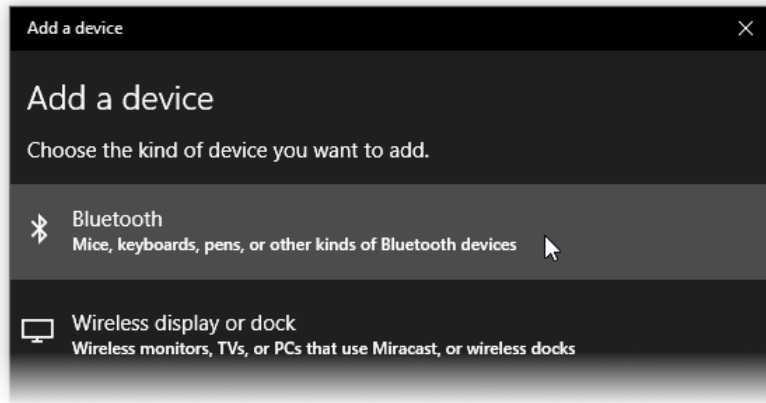


3. Click “Add Bluetooth or other device” in the “Bluetooth & other devices” window.

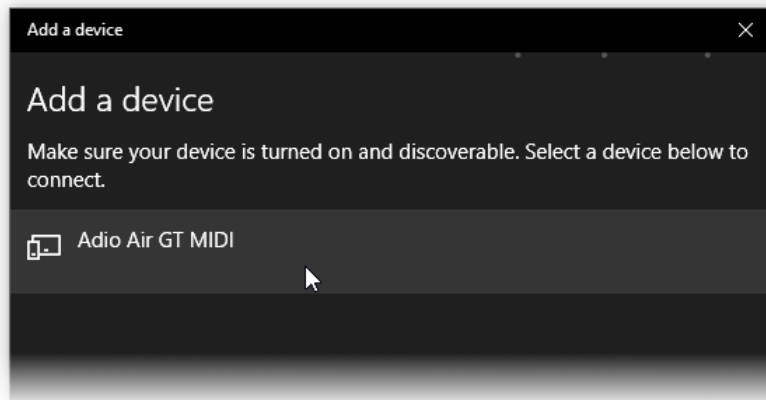
TIP If the version of Windows is before Windows 10 Creators Update, “Manage Bluetooth devices” window will be shown. Choose a device indicated as “Ready to pair” and click “Pair”, then proceed to the 6.



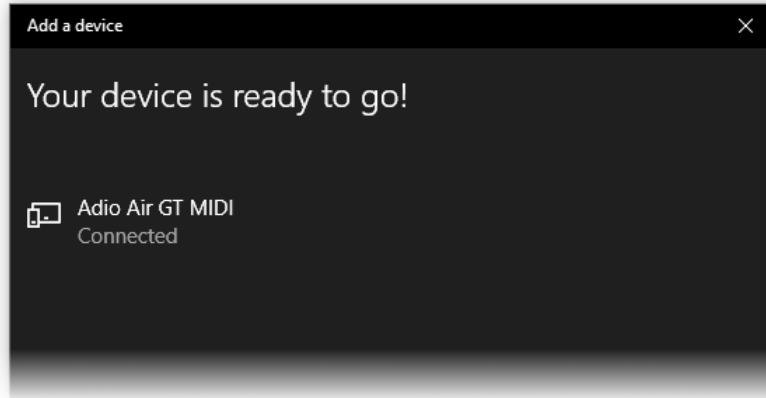
4. Select "Bluetooth" in "Add a device" window.



5. Select your device from the list



6. Once the device is connected to Windows, "Connected" is shown and click "Done".



7. Launch the MIDI application such as Tone Room and the connection will be finished.

Note

- This cannot be used by multiple MIDI applications simultaneously.
- If the Bluetooth MIDI device fails to connect to the PC when you launch the MIDI application, please remove the device from the list of the "Bluetooth & other devices" window or the "Manage Bluetooth devices" window and pair it again.
- After installing the major update like Windows 10 Creators Update, please remove the all Bluetooth MIDI devices previously paired from the list of the "Bluetooth & other devices" window and pair the devices again.



Vox Amplification Ltd.

1 Harrison Close, Knowlhill, Milton Keynes, MK5 8PA. UK

www.voxamps.com